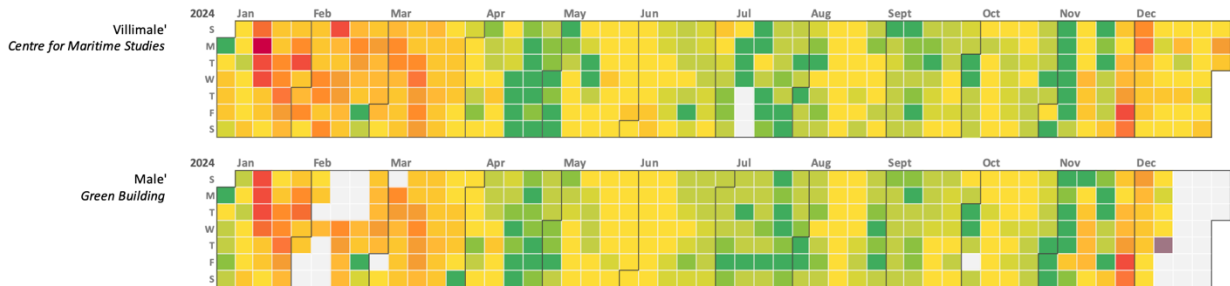
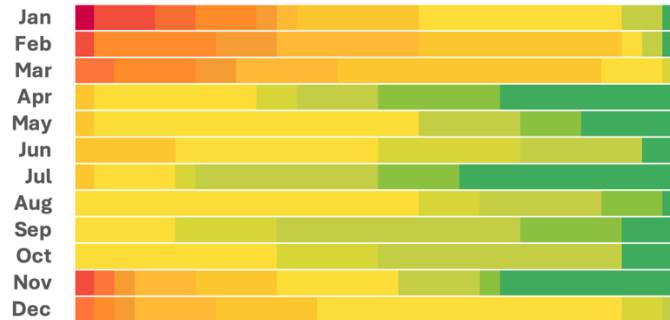




Ministry of Tourism and Environment
Male', Republic of Maldives

Annual Air Quality 2024

Seasonality of Air Pollution in Greater Male' in 2024



Seasonal Variations: Pollution levels were highest in January and lowest in September, with December to March generally recording the worst air.

Highest PM_{2.5} Levels: Pollution peaked at a daily average of 90.46 $\mu\text{g}/\text{m}^3$ on 15th January 2024. Malé City had slightly higher pollution levels than Villimale' during the non-haze period.

	US AQI Level	PM _{2.5} ($\mu\text{g}/\text{m}^3$)	Health Recommendation (for 24 hour exposure)
	Good 0-50	0-9.0	Air quality is satisfactory and poses little or no risk.
	Moderate 51-100	9.1-35.4	Sensitive individuals should avoid outdoor activity as they may experience respiratory symptoms.
	Unhealthy for Sensitive Groups 101-150	35.5-55.4	General public and sensitive individuals in particular are at risk to experience irritation and respiratory problems.
	Unhealthy 151-200	55.5-125.4	Increased likelihood of adverse effects and aggravation to the heart and lungs among general public.
	Very Unhealthy 201-300	125.5-225.4	General public will be noticeably affected. Sensitive groups should restrict outdoor activities.
	Hazardous 301+	225.5+	General public at high risk of experiencing strong irritations and adverse health effects. Should avoid outdoor activities.